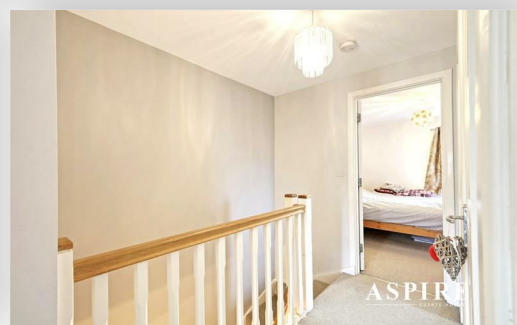


**To arrange a viewing contact us
today on 01268 777400**



The Poppies, Benfleet Asking price £425,000

Aspire Estate Agents are thrilled to present this exceptional three-bedroom semi-detached home, perfectly positioned within a highly desirable development.

This fantastic property is perfect for families, featuring a bright and spacious open-plan living and dining area that flows effortlessly into the rear garden—ideal for hosting guests or enjoying quality time with loved ones. The stylish and well-appointed kitchen is designed for convenience, offering ample storage and workspace to prepare delicious meals.

Upstairs, the master bedroom benefits from its own en-suite shower room, while two further well-sized bedrooms provide comfortable accommodation for the family. A sleek and modern family bathroom completes the first floor, with the added bonus of a downstairs cloakroom for extra convenience.

Set within a peaceful cul-de-sac, this superb home enjoys a prime location in a sought-after development. Excellent schools, a variety of local shops, and essential amenities are all within close proximity, along with fantastic transport links for an easy commute.

The private rear garden provides a wonderful outdoor space, featuring a patio area perfect for alfresco dining and a well-maintained lawn. A garage and driveway offer ample parking and additional storage solutions.

Properties in this location are in high demand—don't miss out on this incredible opportunity! Contact Aspire Estate Agents today to arrange your viewing.

Lounge/Diner: 5.46m x 4.76m (17'11" x 15'8") max

Kitchen: 4.03m x 2.57m (13'3" x 8'5")

Hallway

Downstairs WC

Understairs Storage

Landing

Master Bedroom: 3.26m x 3.24m (10'8" x 10'8")

Walk-in Wardrobe

En-Suite

Bedroom Two: 3.75m x 2.65m (12'4" x 8'8")

Bedroom Three: 2.50m x 2.02m (8'2" x 6'7")

Family Bathroom

Storage Cupboards on Landing

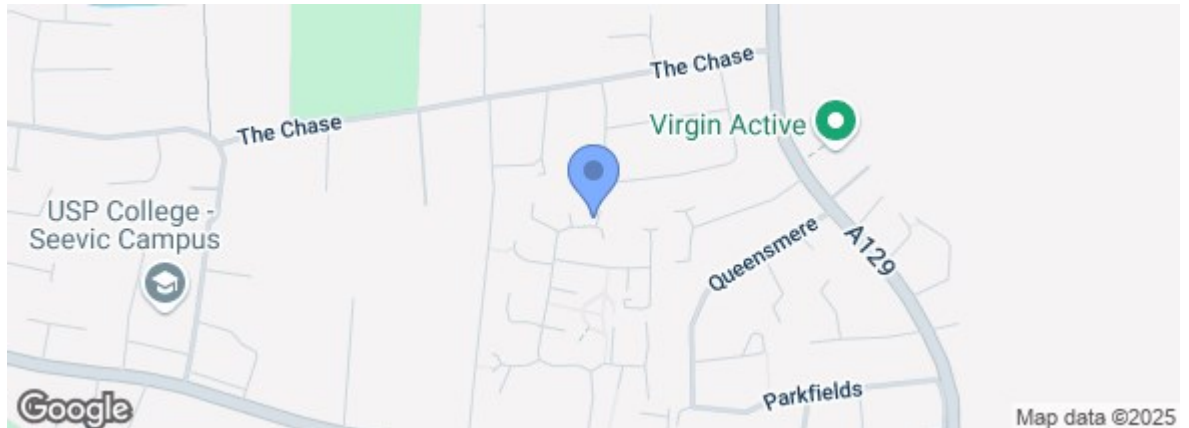
Garage: 7.10m x 3.00m (23'4" x 9'10")



Total area: approx. 107.8 sq. metres (1160.7 sq. feet)

All measurements have been taken as a guide to prospective buyers only and are not precise. This plan is for illustrative purposes only and no responsibility for any error, omission or misstatement. The services, systems and appliances shown have not been tested and no guarantee as to their operability or efficiency can be given. Measurements may have been taken from the widest area and may include wardrobe/cupboard space. No guarantee is given to any measurements including total areas. Buyers are advised to take their own measurements.
Plan produced using PlanUp.

Energy Efficiency Rating	
Very energy efficient - lower running costs	Current Potential
(92 plus) A	95 83
(81-91) B	
(69-80) C	
(55-68) D	
(39-54) E	
(21-38) F	
(1-20) G	
Not energy efficient - higher running costs	
England & Wales EU Directive 2002/91/EC	
Environmental Impact (CO ₂) Rating	
Very environmentally friendly - lower CO ₂ emissions	Current Potential
(92 plus) A	
(81-91) B	
(69-80) C	
(55-68) D	
(39-54) E	
(21-38) F	
(1-20) G	
Not environmentally friendly - higher CO ₂ emissions	
England & Wales EU Directive 2002/91/EC	



Under the Property Misdescriptions Act 1991 we make every effort to ensure our sales details are accurate but they are a general outline and do not constitute any part of an offer or contract. Any services, equipment and fittings have not been tested and no warranty can be given as to their condition. We strongly recommend that all the information provided be verified by your advisors and in particular, measurements required for a specific purpose such as fitted furniture or carpets. Please tell us if you have any problems and members of our branches will help either over the phone or in person. A copy of our complaints procedure is available on request. The details are issued on the strict understanding that any negotiations in respect of the property named herein are conducted through Aspire Estate Agents.